



PPI Human Performance  
**TRAIN-the-TRAINER**  
OPPORTUNITY MANIFESTO

Human Performance  
LEADERSHIP!





**Better than a thousand days of diligent study  
is one day with a great teacher...**

## **Your PASSION to Make Our World a Better**

There are those of us born with an internal fire- a burning desire...an intrinsic NEED...to do whatever we can to make our world better- safer, more just, more fulfilling.

Since you're reading this, I trust you KNOW what I mean.  
It's been part of you since your beginning.

You've sought to do your part. It's likely you've already had some success in making a difference- for yourself and in the lives of others.

But you want to do more...

## **The SKILLS to Make it Happen...**

It's been said for many years- when the student is ready, the teacher will appear.

Your Team Members are ready...eager in fact- to be shown new frameworks, a different perspective, a more coherent, sane, and mindful approach to meaningful change.

Influencing others requires SKILL- the ability to reach in and grab hearts, minds, and souls.

This is how you have true impact.

This is how you change the world.

It's time for you to become that teacher.

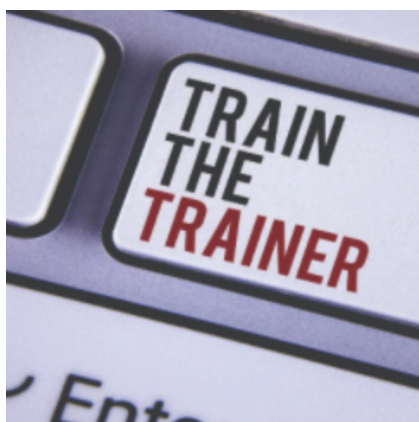
Let's make it happen-



Tim Autrey  
Founder/CEO  
PPI Global, Ltd.

PPI Human Performance TRAIN-THE-TRAINER is available a few times per year.  
For information on upcoming availability, GO HERE: <https://www.ppiweb.com/events/>





## PPI Human Performance **TRAIN-the-TRAINER**

### How it works...

To be eligible to attend PPI Human Performance TRAIN-the-TRAINER, you must

- (1) be a member of an organization engaged in PPI Implementation,
- (2) successfully complete the Human Performance Masterclass, and
- (3) pass the Human Performance Leadership (HPL) Exam.

The Masterclass and HPL Exam can both be completed online; however, the TRAIN-the-TRAINER portion must be completed in-person.

Most find it more rewarding and insightful to attend the Human Performance Summit with like-minded professionals and complete both learning experiences back-to-back.



For Upcoming SUMMIT  
Opportunities  
**CLICK HERE**

<https://www.ppiweb.com/events/>

### Itinerary Options...

When attending the SUMMIT, you'll complete some pre-work prior to arrival. The SUMMIT begins on Monday evening. The Human Performance Masterclass concludes on Thursday afternoon, at which time you'll be asked to complete your HPL Exam. TRAIN-the-TRAINER, which includes your recorded facilitation demonstration, begins on Thursday afternoon and runs through Friday.

When completing the Human Performance Masterclass online, you'll be asked to complete your pre-work and pass the HPL Exam prior to your in-person attendance starting on Thursday afternoon.



## PPI Human Performance **TRAIN-the-TRAINER**



During your time with your  
PPI Master Mentor, you will...



walk you through every step of the Human Performance BASIC (HUB) Training™ Facilitator materials,



receive guidance and learn tips and 'tricks' from your PPI Master Mentor, and



be given insights into how to deal with difficult students and difficult situations in the classroom.



You'll have an opportunity to present your selected section of the curriculum to your fellow participants,



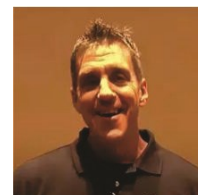
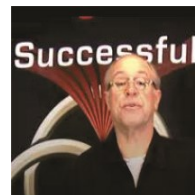
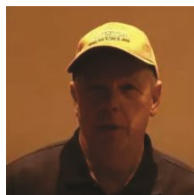
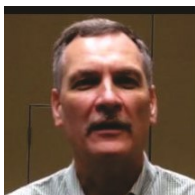
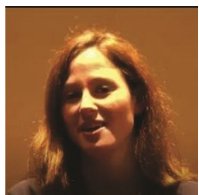
receive Principle-Based™ feedback from your fellow participants, as well as feedback and mentoring from Tim Autrey and your PPI Master Mentor.



You'll receive a digital recording of your presentation and critique for future reference

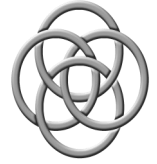


See what others have to say: <https://www.ppiweb.com/testimonials/>





## PPI Human Performance **TRAIN-the-TRAINER**



### Your 3-Step Process:

#### Training & Certification

Once you've successfully attended the HPI Masterclass, passed the HPL Exam, and completed the TRAIN-the-TRAINER Learning Experience, you'll then be eligible to QUALIFY and receive your Active Facilitator License.

#### Qualification

To Qualify, you will facilitate a Human Performance BASIC Training™ (HUB) Course within your organization) to the satisfaction of a PPI Master Mentor.

#### Your License

Once qualified, you will be \*Licensed to facilitate the PPI HUB Training Course within your organization.




\*Your initial License will remain active for two (2) years.



### You'll be Provided with Digital Access...









Once licensed, you'll be given the key to your online PPI Facilitator Access Portal. You'll have digital access to:

-  Complete set of PowerPoint Files (including full Instructor Notes)
-  All HUB Exercise Guides
-  All HUB Resource Files

\*You'll become a member of PPI LAB, which gives you access to...



Proprietary Success Path and LIVE online Mastermind sessions with Tim Autrey, **PLUS...**

-  Leader Worksheets
-  Team Exercises
-  Jump Start Packs
-  Mini-Courses
-  Video Library
-  App Library

\* Your initial qualification & licensing includes (2) years of PPI LAB Membership





## PPI Human Performance **TRAIN-the-TRAINER**



## **FAQs** (Frequently Asked Questions)

### **GO HERE:**

<https://ppiglobalaccess.com/tttfaq>

## **Upcoming Opportunities**

### **GO HERE:**

<https://www.ppiweb.com/events/>

## **To Register...**

### **ONLINE:**

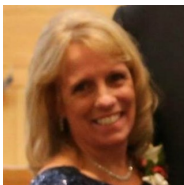
<https://ppiglobalaccess.com/hpi-summit-2021>

### **OFFLINE:**

Contact Cheryl (see below)



## **Still have questions?**



If you're interested in applying for PPI TRAIN-the-TRAINER or if you still have questions, call Cheryl, our Strategic Administrator, at 1-702-331-8391

(or you can send her an email: [cheryl.demarais@ppiweb.com](mailto:cheryl.demarais@ppiweb.com))

If you'd like to talk with me personally, let Cheryl know, and she'll set up a time for us to chat.

